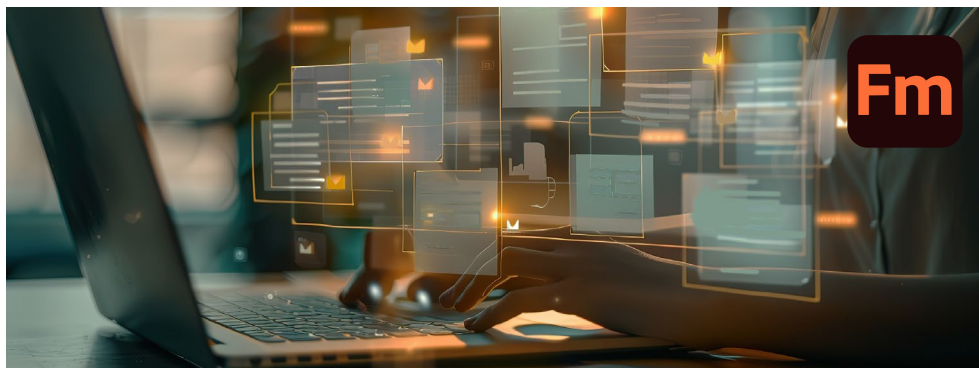


Creating Element Definition Documents (EDDs)

Training course outline

Element Definition Documents (EDDs) are one of the core components of a structured FrameMaker implementation, adding a layer of context rules to allow the mapping of formatting properties to the data model based on the relationship of elements and attribute values.



Course summary

Teaches how to:

- Build an EDD.
- Link elements using formatting rules to a FrameMaker template
- Convert legacy data to a structured FrameMaker file using a conversion table.

Duration

Two days.

Who should attend?

This course is ideal for anyone who needs to define the elements and attributes to be permitted in their structured FrameMaker documents.

Pre-requisites

Delegates should have a good understanding of using FrameMaker in structured mode, i.e. be familiar with the techniques taught in our *Authoring structured FrameMaker documents* course.

In-class or live online

You can attend in-person at our centres, or participate live online from your place of work or home.

To read about our approach to online training, see armada.co.uk/liveonline.

General information

For over two decades Armada was a leading provider of technical authoring services. Our background makes us ideally suited to offering training in applications used by technical authors.

Refreshments and lunch are provided.

Course fees can be paid by card or bank transfer. We accept purchase orders from UK-registered companies and public sector organisations.

Course materials and certificate

You'll receive:

- A comprehensive training guide and practice files.
- An e-certificate (PDF) confirming successful course completion.

Method of delivery

Training is designed for the busy professional, being short and intensive and combining lecture and demonstration. Practical exercises carried out under guidance help you learn the techniques taught.

You have ample opportunity to discuss specific requirements with the trainer.

After course support

Following training, you're entitled to 30 days' email support from your trainer.

Further information

See armada.co.uk/course/edds.

Course syllabus

See over.

Course syllabus

| Topics | Sub-topics |
|--|---|
| Introduction | What is an EDD? Understanding what an Element Definition Document (EDD) is and where it sits in the development cycle |
| Creating an EDD | Experimenting with the different processes of generating an initial EDD. |
| Defining Container Elements | Creating container elements and writing general rules Understanding the syntax of occurrence indicators, connectors and models Assigning comments to element definitions Setting the Element Type and defining an element as the Valid Highest Level |
| Importing the EDD into a Template | Testing the EDD as you create it by importing it into a template and testing the structure by creating a dummy document |
| Defining Table Elements | Creating table elements and understanding the general rule restrictions for table and table part elements |
| Inclusions and Exclusions | Defining elements as Inclusions and Exclusions |
| Auto insertions | Setting elements to be automatically inserted as child and nested child elements |
| Object Formatting | Setting an initial table format and initial row pattern on insertion of an element Defining initial object formats for cross reference, equation, graphic, marker and system variable elements |

| Topics | Sub-topics |
|--------------------------|---|
| Attributes | Creating an attribute list for elements Understanding the different types of attributes and setting special attribute controls |
| Text Format Rules | Specifying the ElementPgFormat Tag Writing all contexts rules and context rules specifically to name ancestors and siblings Writing a level rule and use context labels Specifying First/Last paragraph rules Setting Prefix and Suffix rules to extract attribute values |
| Book Building | Defining an element for structuring books and elements for individual book components such as Table of Contents and Index. Generating a book file |
| Conversion Tables | Structuring unstructured legacy data by creating and applying a conversion table |
| Export to HTML | Using the HTML Reference Page to export a structured document to multiple HTML pages Including the HTML mapping set-up information in the EDD |